
U-TURN SOLUTION

1. Hold puzzle by top of triangle, allowing shoe to hang free. See Figure 1. Move hanging rings to left side.
2. Tip the top of the puzzle so that the point of the triangle faces away from you.
3. Put ring through oval, making sure ring moves along the bottom and right side of oval. Position left side of ring along top side of left bead. See Figure 2.
4. Press down on right bead to create an opening between bead and side of triangle (this does NOT require any degree of force). Pass ring through opening and over top of right bead.
5. Move ring down and out of oval and over tip of diamond. Return triangle to upright position. Puzzle should look like Figure 3.
6. Swing shoe to left, keeping it in front of triangle. Oval and right diamond will be parallel, with oval above diamond. See Figure 4 for correct positioning.
7. Put ring up through diamond (on side facing you), and up through oval. When done correctly, ring will extend more than half-way through diamond and oval. Be sure that diamond does not pass into oval. See Figure 4.
8. Move right bead down, pass ring over top, and down through oval and diamond to remove.

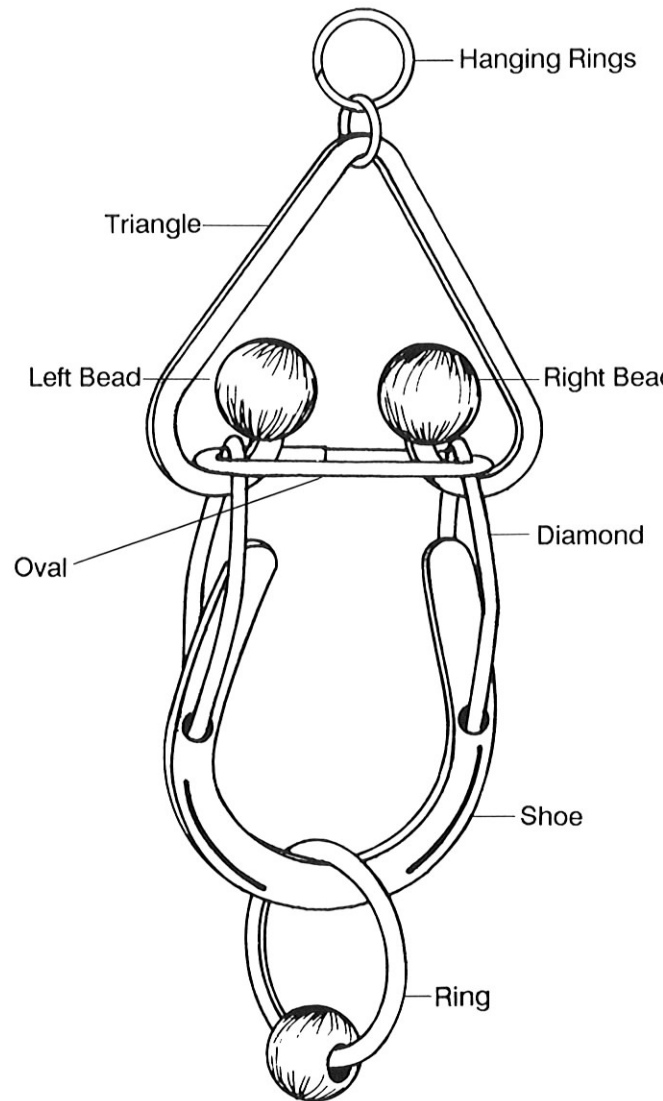


Figure 1

REASSEMBLY: Hold puzzle as in Step 6. Pass ring through bottom of diamond, then oval. Move right bead down, pass ring over. Continue moving ring down through oval AND diamond. Position as in Figure 2. Put ring through oval (in front of bead). Move bead, pass ring over, and allow to drop down on shoe.

U-TURN DIAGRAMS

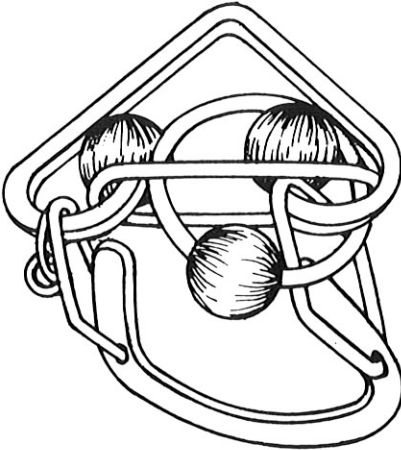


Figure 2

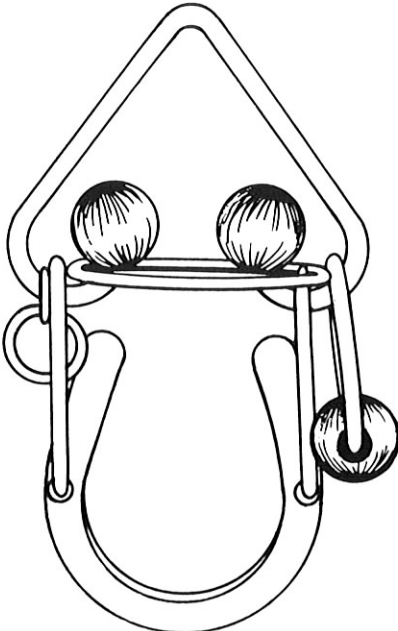


Figure 3

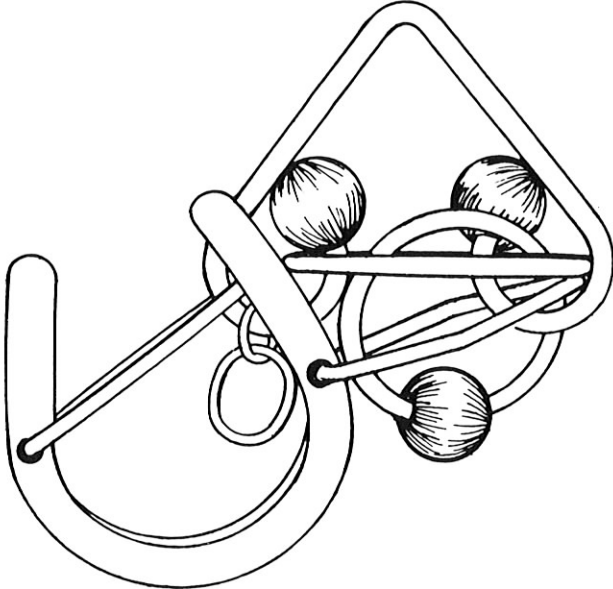


Figure 4
