

---

---

## PAINTED LADY SOLUTION

---

---

Identify all parts before beginning. See Figure 1.

1. Turn puzzle upside down, as in Figure 2. Large ring will be between body and one wing. This wing will remain straight up and down for the next step.
2. Turn the other wing at an angle to the up and down wing. Bring ring up off body and around small end of wing. See Figure 3. Bring along outside of wing toward large end, and down onto body.
3. Fold wings together. Bring ring up off body, follow around wings to remove.

**NOTE:** Jiggling and shaking the puzzle will help if small oval rings seem to get in the way of movements.

**REASSEMBLY:** Very important: To reassemble, puzzle must look like Figure 2. If body or wings have been twisted, fix before reassembling.

1. With wings folded together, pass ring over small end of wings; follow along wings and bring down onto body.
2. Unfold wings a bit (keep small ends close together). Put ring between the ends of the wings where body is hanging
3. Bring ring around one wing; be sure that the ring goes over the end of one wing only. Bring the ring along the wing to the small end. Wings can then be opened and the ring will drop between them.

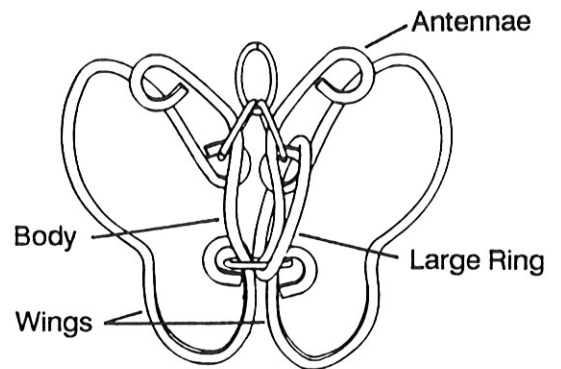


Figure 1

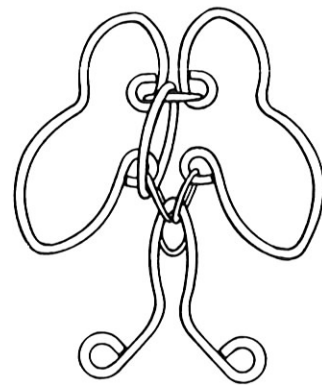


Figure 2

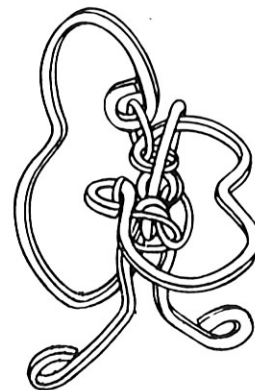


Figure 3

To hang Painted Lady for display: Hold puzzle as in Figure 2. Push body up to oval ring at the small ends of the wings. Make sure that body is on the same side of all four eyes that form the ends of the wings. Hold body in position, and grasp oval ring near "antennae". Turn puzzle over. Puzzle can be hung from oval ring.

---