

---

---

## TINKER'S BELL SOLUTION

---

---

See Figure 1 to identify all parts before beginning. All steps take place on the open side of the puzzle. Be sure the top of the clapper stays at the notch when solution is begun.

1. Bring ring up off triangle; pass ring over eye A, through the center of part C, and continue following clapper up to notch.
2. Tip bottom of clapper toward closed side. Bring triangle up through center of part C. Figure 2 shows the start of this step, as well as the correct position of the ring.
3. Swing bottom of clapper into position next to eye A. This will allow the triangle to pivot on the small ring. Large ring can be moved down the closed side and passed over eye B.

**CHECKPOINT:** See Figure 3. The position of the triangle and small ring is important. If not positioned correctly, readjust them before proceeding (the ring can stay where it is).

4. Move ring toward triangle (part C is in the center of the ring), and up over eye A. Remember to keep the triangle and clapper in position; otherwise, the ring will not pass over eye A.
5. Triangle and clapper can now be released. Tip ring down through part C. See Figure 4.
6. After ring has cleared part C, pass over eye A to remove.

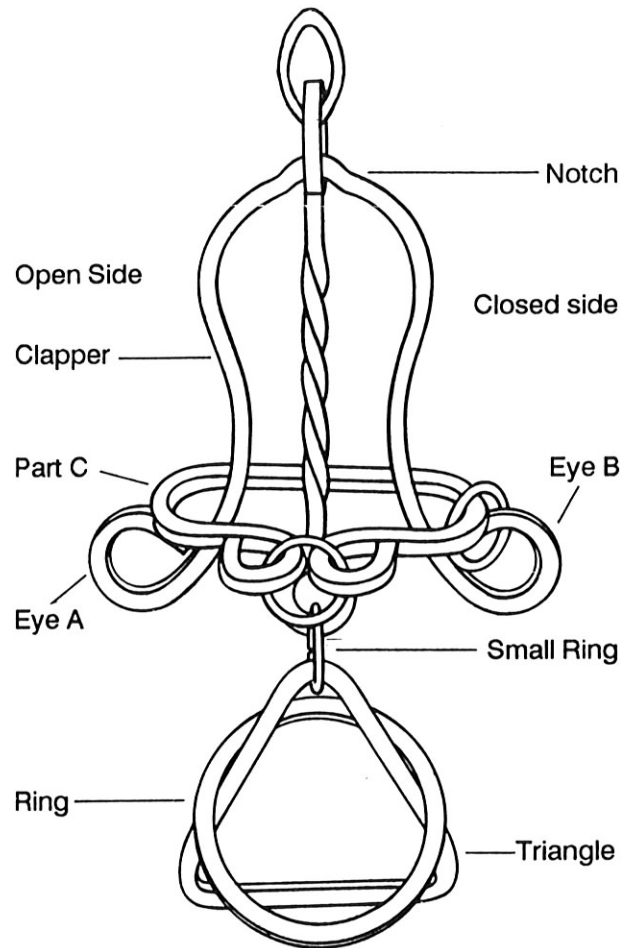


Figure 1

---

---

## TINKER'S BELL DIAGRAMS

---

---

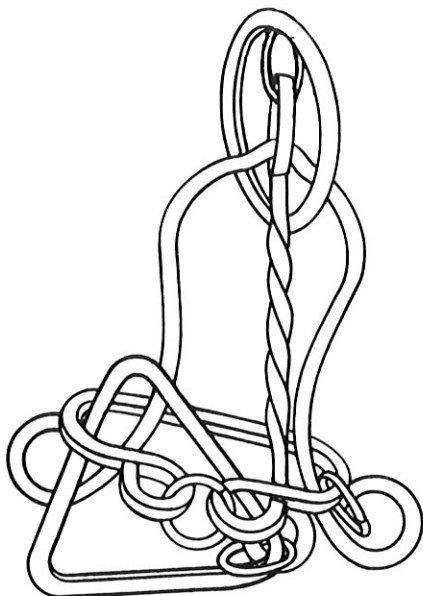


Figure 2

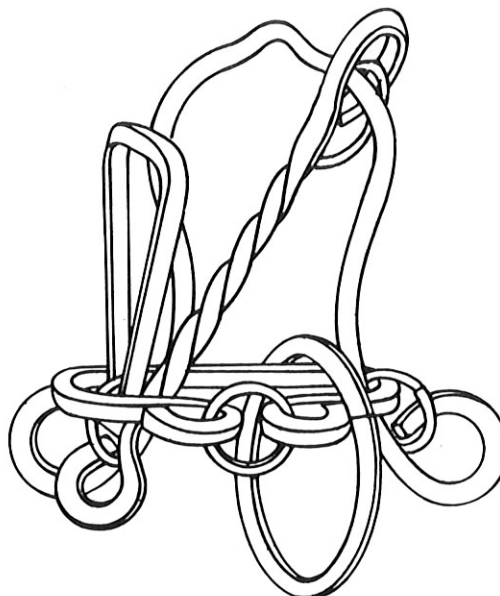


Figure 3

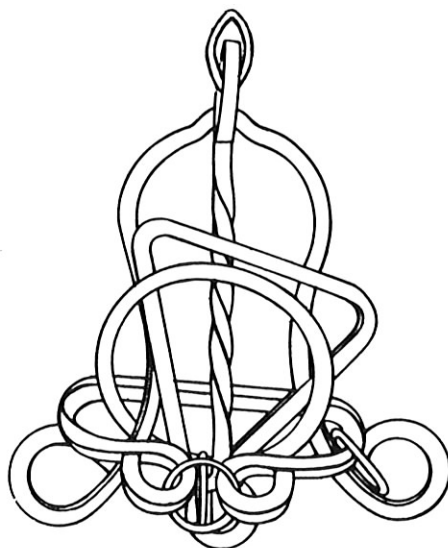


Figure 4

**REASSEMBLY:** Start with triangle up though part C (as in Figure 4). Pass ring over bottom of clapper and eye A, then up through center of C. Rest ring on top of C. Pivot triangle on small ring. Review Checkpoint, Step 3 and Figure 3 for help with this step. Pass ring down over eye A, along C, over eye B, and up to notch. Release triangle, allowing it to drop down through C to beginning position. Remember to keep the top of the clapper at the notch. Bring ring down clapper, through part C, over eye A, to come to rest on triangle.

---