
TRAVELER'S WOE SOLUTION

1. Start with puzzle as shown in Figure 1. Move shuttle nose to the inside of the scroll, so that it is between ring A and the small ring attached to the chain. See Figure 2.
2. Bring tail end of shuttle around closed side of puzzle and over top. See Figure 3.
3. Pass ring A through the inside of the shuttle. Allow shuttle to hang free from the bottom of the puzzle.
4. Hold shuttle by tail, and pass nose through ring A, from outside to inside.
5. Twist shuttle so that tip points toward closed side of puzzle. See Figure 4.
6. Rotate shuttle to allow one side to pass below bottom of scroll. See Figure 5.
7. With shuttle tip pointing toward top of puzzle and scroll inside of shuttle, move tip around scroll. Remove shuttle from ring A.

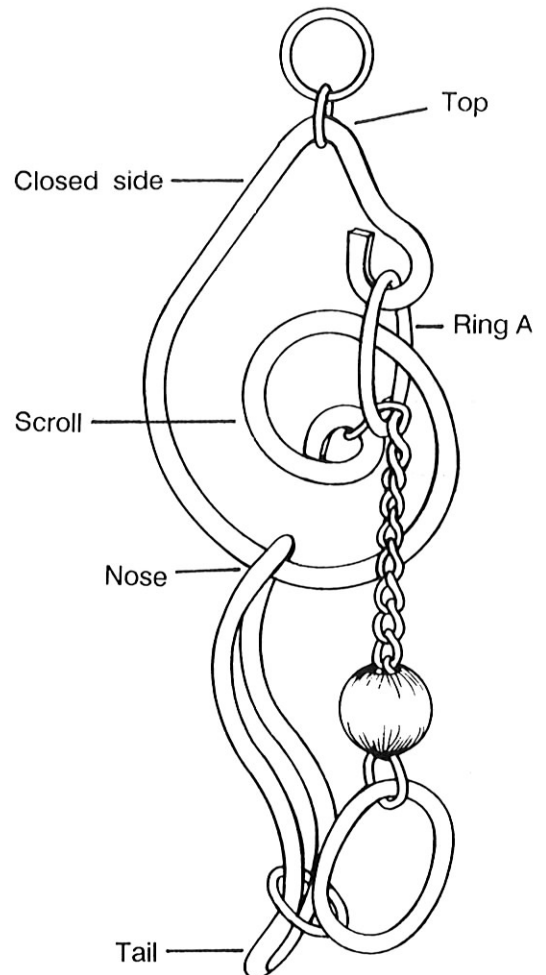


Figure 1

TRAVELER'S WOE DIAGRAMS

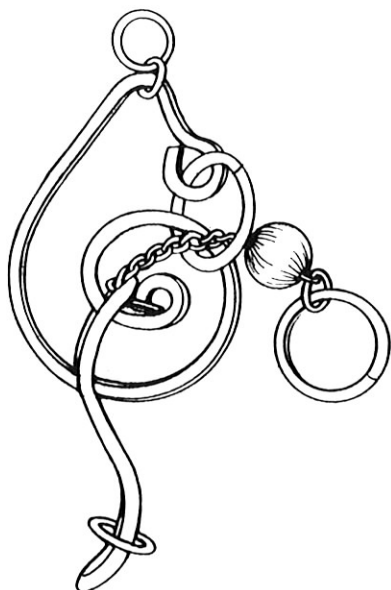


Figure 2

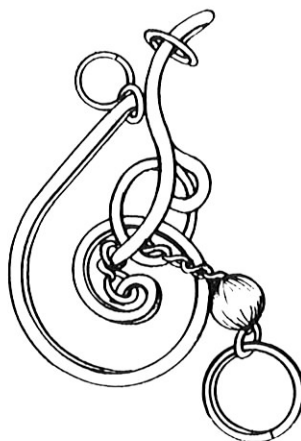


Figure 3

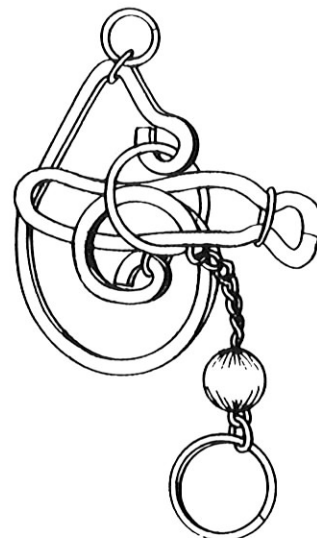


Figure 4

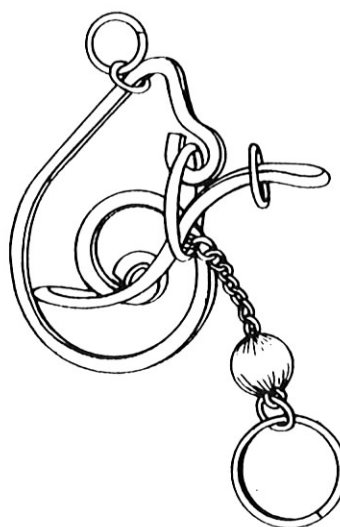


Figure 5

REASSEMBLY: Traveler's Woe can be reassembled easily by following the drawings in reverse. Start with nose of shuttle pointing toward top of puzzle. Put shuttle through ring A, from outside to inside. Drop shuttle nose down over outside of scroll. Rotate shuttle so that both sides pass bottom of scroll. Withdraw shuttle from ring A. Bring tail of shuttle toward top of puzzle. Pass ring A through shuttle. Continue moving shuttle along closed side of puzzle, to come to rest on the bottom of the puzzle, as in Figure 1.

NOTE: Be sure to begin reassembly with the curve of the shuttle in the right direction. If the shuttle is reversed, Traveler's Woe becomes a simple puzzle!
